

---

# TABLE OF CONTENTS

---

INTRODUCTION	1
SYSTEM REQUIREMENTS	2
HOW TO INSTALL	2
ACTIVATION & DEACTIVATION	2
ACCESSIBILITY PERMISSION	2
HOW TO USE BG BUILDER	3
THE MAIN WINDOW	3
THE COLOR CODING	4
THE BEST MATCHES WINDOW	5
PRO TOOLS CONFORMING	6
FAQ	7
TODD-AO SOFTWARE LICENSE AGREEMENT	8

## INTRODUCTION

---

**BG Builder** is a productivity tool designed to streamline the placement of background (BG) sound effects in an Avid Pro Tools super session. It is primarily used in sound editing for episodic series but can also be employed in feature films organized by reels or when working with a BG template, which experienced editors commonly use.

### Key Features

BG Builder automates scene-matching by utilizing Video Edit Decision Lists (EDLs) and Lined Scripts or Continuity Lists. An intelligent algorithm analyzes the source files to find matches and swiftly generates a conform EDL for assembly. Additionally, BG Builder employs Apple Scripting to take control of Pro Tools and assemble the new episode or reel.

### Enhancing Creativity

In episodic series, many scene locations repeat across episodes. BG Builder eliminates redundant tasks, freeing up valuable time for the editor to focus on creative aspects of sound design.

## SYSTEM REQUIREMENTS

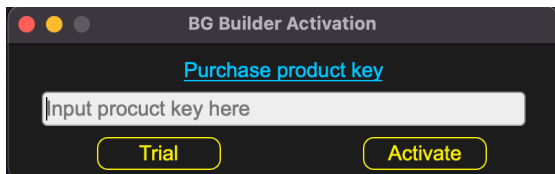
Mac OS X 11 or higher for the Apple Silicon M1/M2 version  
 Mac OS X 10.15 or higher for the Intel version

## HOW TO INSTALL

1. Download the installer from [bg-builder.com](https://bg-builder.com)
2. Double-click the "BG-Builder\_Installer.zip" and install the right version for your machine.

## ACTIVATION & DEACTIVATION

The first time opening the app will prompt the license activation window



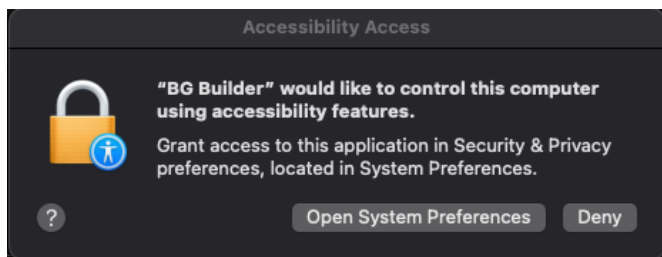
A fully functional 7-day trial is available. After that period, please purchase a license. Please enter your license and click on the **Activate** button

Users can Deactivate their licenses by going to the **License** menu > **Deactivate**. Once deactivated, it can be activated on another machine.

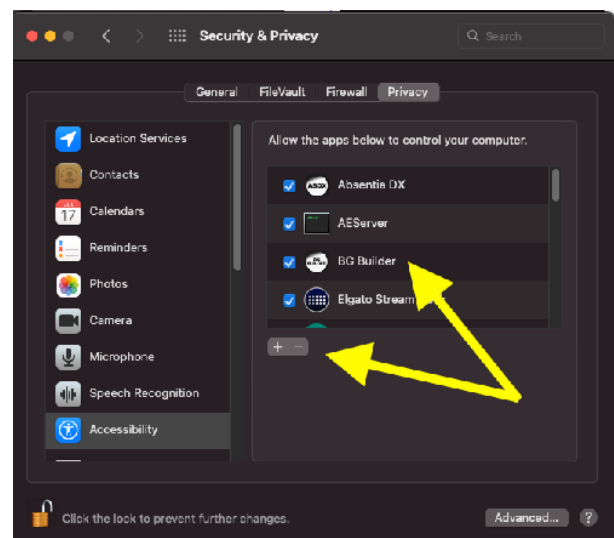
*To request a remote deactivation, please reach us at [software@todd-ao.com](mailto:software@todd-ao.com)*

## ACCESSIBILITY PERMISSION

After the license activation prompt, BG Builder will ask for Accessibility features.



Please click on **Open System Preferences** and then click the **+ Icon** to add the BG Builder app.



## HOW TO USE BG BUILDER

### Source Files

BG Builder requires specific source files to function effectively:

- 1. Locked Video EDLs:** Ensure that your locked Video Edit Decision Lists (EDLs) match the cut in your Pro Tools super session. This alignment is crucial for BG Builder to automate the scene-matching process accurately.
- 2. PDF Line Scripts or Continuities:** Provide PDF Line Scripts or Continuity documents for each episode or reel. These documents are essential references for BG Builder to streamline its operations.

*Note: If you have both Lined Scripts and Continuity Lists, we recommend using the Scripts since they are more consistent across episodes, as the production makes them.*

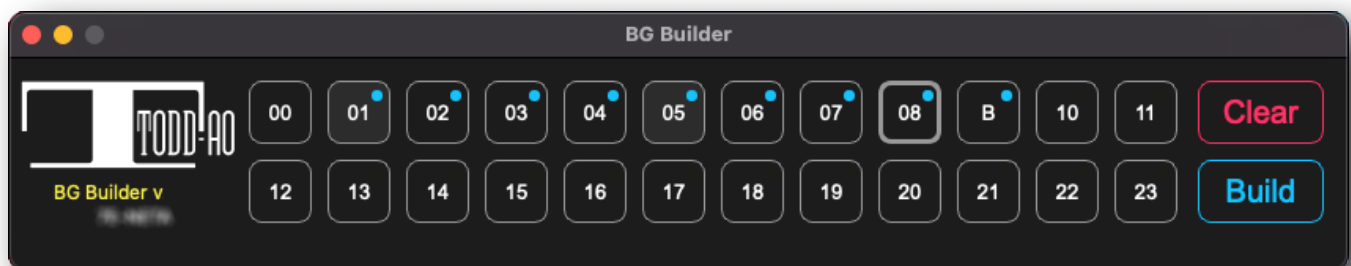
Video EDLs and Scripts are also required for the target episode/reel. The algorithm will use them to find matches and then re-conform them in Pro Tools.

*If your PDF is in a different format and not recognized, please contact us so we can add it.*

[Submit files to our server now](#) (files will be treated with privacy and deleted after the format is added)

**Pro Tools Super Session:** A super session containing the Backgrounds editing from the source episodes (each at their corresponding hour). BG Builder matches locations from the source episodes and conforms them automatically in Pro Tools.

## THE MAIN WINDOW



*BG Builder main window ready to Build (see color coding below)*

Each **box** of the main window represents an **hour** of the timeline.

The user can drop single source/target files into each hour box or a whole folder containing all the source/target files into the Folder Drop zones.



Drop a folder with all the files into the drop zone or single files into each hour.

### Automated workflow:

Dropping a folder with PDFs/EDLs from 101 to 109 episodes will place each episode at its corresponding hour. The hours are scanned from the picture EDLs.

The last episode/hour will be taken as the **target** episode to **Build**, highlighted with a **B**.

### Manual workflow:

Alternatively, the user can drop an episode (pdf & edl) into a particular hour (box).

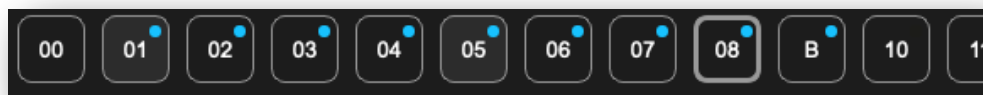
For better understanding, we present this example:

Think that you are building episode 3 from Season 2 (ep203), and you use all the episodes from S1 and S2 as sources. S1 has nine episodes (101-109) and S2 has 201-202

Dropping the S1 folder into the Folder Drop zones will place them into hours 01 to 09.

201 and 202 cannot use hours 01-02 since those are taken. In this case, you can drop 201 to hour 10, and 202 to hour 11. Make sure to have the episodes in the Pro Tools super session at those same hours.


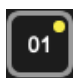


Lastly, drop ep203 (target) into hour 12 or any available hour. The last hour will be highlighted with a **B**. The target episode can be changed by selecting a different episode and clicking the **Cmd+B** shortcut.



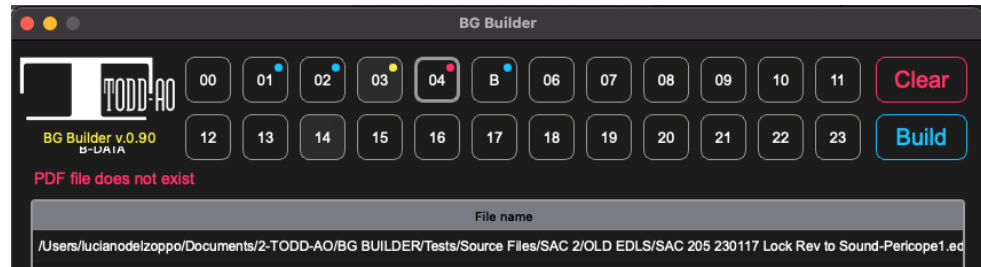
## THE COLOR CODING

The picture above shows a sample of dropping a folder with episodes 101-109, being **101-108 sources**, and **109 target** (B). The blue dot on each episode box indicates that files were recognized and imported to the database, while the other colors can indicate an error.

Here's the color coding:

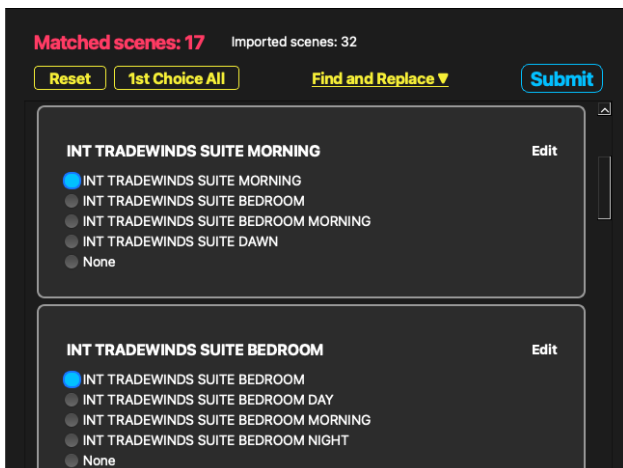
-  Episode is OK with a video EDL and PDF script imported
-  Duplicated or wrong EDL issue.
-  PDF script is missing.
-  Duplicated TXTs

Clicking on each box deploys the expanded view, showing the files loaded on that hour. To remove a file, select it, and use the Backspace key to delete it. Error hints are shown in red when there is something wrong.



Hours 03 and 04 have an issue. 03 has duplicated EDLs, and 04 is missing a PDF file.

## THE BEST MATCHES WINDOW



The Best Matches window is where users pair locations whose names are not identical. It will help put more matches on the Build and save from editing the text databases to get more conformed regions.

After clicking on **Build**, this window pops up. Here, the user can choose alternative locations that do not match 100%.

### 1st Choice All

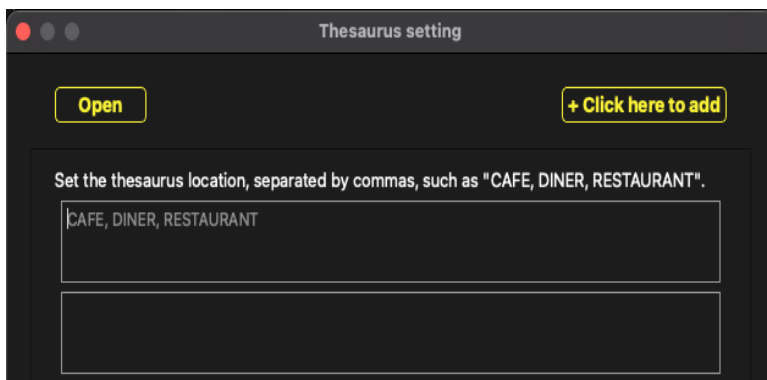
The first option is always the most similar. Clicking this button will select that for all the locations.

### Edit Target locations

Use the "Edit" button at the top right of each box, to change the target location name. After saving the change, new matches will appear below.

Use the "Find and Replace" to change several location names simultaneously.

*The target locations are the bold ones at the top of each box*



### Thesaurus locations

Open the Thesaurus window from the Settings menu.

Put similar location names to match inside each box. The app will consider them as a 100% match.

In the picture sample, the app will match all "Cafe", "Dinner", and "Restaurant" locations.

The **"Submit"** button will continue with the Build with the choices made.

### Backup Best Matches

After making choices (matches) and clicking on the **Submit** button, a **conform EDL** will be generated in the Desktop, along with the other text databases.

That conform EDL is a backup of the choices that were made on that build.

Follow these steps if you need to “restore” it

- Drop the source/target files again into BG Builder main window.
- Click the Build button.
- Drop the xxx\_conform.edl file into the Best Matches window, and the choices will be restored.

The conform EDL backup could be handy to select matches in one machine and do the Pro Tools conformation in another one.

## PRO TOOLS CONFORMING

### Conforming the matched locations:

When all hours show blue, BG Builder is ready. Open the Pro Tools super session, and select all the BG tracks to be conformed. Then click the **Build** button to start the process. After matching locations from the Source hours, BG Builder will control Pro Tools to copy those regions and paste them into the target timecode.

**Please make sure not to use the mouse or keyboard while this process is running.**

When the conform ends, the Pro Tools session is ready for an FX/BG editor to work on the fine tune editing and finish the backgrounds cutting. Look on the Desktop for a BG Builder folder that was generated. The folder contains a .txt database file per each hour. Use those texts in the future as replacements for the PDFs/EDLs. There will also be one conform EDL for the target episode/hour. This EDL can be used on another Conform application.

## FAQ

---

### Is BG Builder compatible with Intel Macs?

Yes, from v1.02 we added support for Intel Macs.

Based on customer response we will then consider Windows x86 support. Non-Mac ARM and Non-Pro Tools DAW's are supported with a conform.edl file that is created alongside the databases, please use the conform.edl with your favorite assembly software.

### How can I make a clean uninstall of BG Builder?

If you encounter issues with the app behavior, we suggest to do a clean uninstall

1- Delete the BG Builder app from the Applications Folder

2- Delete file ".5vmpk4jvru37qhnh2igywfmfbffexnqi" from /Users/your-username/Library/Application Support/.System/

4- Download the latest version from the [website](#) and reinstall BG Builder

\*For step 2 you'll need to show hidden files in Finder. The shortcut to do that depends on your OSX version; most probably, it is the CMD+SHIFT+DOT key shortcut.

\*\*\* If you need help, we can help by logging into your machine via TeamViewer

### How can I renew my subscription before it expires?

Extend your annual subscription at any time by [clicking on this link](#).

Paste your product key and then click the **Check Product Key** button. After processing the order, one year will be added to your subscription expiration date.

### Can I use BGB with a locations template of my own?

If you use a template when editing BG's, the Txt output from Pro Tools can be adjusted to match that of the database output. Simply add the location names from the script and it will match and be usable by BGB.

## TODD-AO SOFTWARE LICENSE AGREEMENT

THIS IS A LEGAL AGREEMENT BETWEEN YOU AND TODD-AO ("Todd-AO"). READ THIS AGREEMENT CAREFULLY BEFORE YOU USING **BG BUILDER** APPLICATION. BY USING THIS APPLICATION, YOU AGREE TO BE BOUND BY THE TERMS AND CONDITIONS SET FORTH BELOW AND BY ALL POLICIES AND AGREEMENTS INCORPORATED BY REFERENCE, AND YOU REPRESENT AND WARRANT THAT YOU ARE LAWFULLY ABLE TO ACCEPT AND COMPLY WITH THESE TERMS AND CONDITIONS OF USE. IF YOU DO NOT AGREE TO ALL OF THESE TERMS AND CONDITIONS OF USE, DO NOT ACCESS OR USE THIS APPLICATION.

**SOFTWARE.** "Software" means the Todd-AO executable software product accompanying this Agreement, along with any modules, presets, and/or user documentation.

**LICENSE.** Subject to all the terms and conditions of this Agreement, you (a natural person) may use the Software on a stand-alone computer. If more than one user will be using the Software at one time, you must obtain from Todd-AO an additional license for each additional concurrent user of the Software. The Software is "in use" on a computer when loaded into memory (RAM). You may make one copy of the Software solely for backup or archival purposes if all copyright and other notices are reproduced on that copy, or you may copy the Software to a single hard disk provided you keep the original solely for backup or archival purposes. If the Software is an upgrade, you must have a license for the product from which it is upgraded. If you receive the Software in more than one media form, that does not affect the number of licenses you are receiving or any other term of this Agreement.

**OWNERSHIP.** The Software and all intellectual property rights therein (including copyrights, patents, trade secrets, trademarks, and trade dress) are owned by Todd-AO or its suppliers and are protected by the laws of the United States and other countries and by international treaty provisions. Todd-AO retains all rights not expressly granted in this Agreement.

**OTHER RESTRICTIONS.** You may not modify, adapt, decompile, disassemble or otherwise reverse engineer the Software, except to the extent this restriction is expressly prohibited by applicable law. You may not loan, rent, lease, or license the Software, but you may permanently transfer your rights under this Agreement provided you transfer this Agreement, all Software, and all accompanying printed materials and retain no copies, and the recipient agrees to the terms of this Agreement. Any such transfer must include the most recent update and all prior versions.

**LIMITED WARRANTY.** Todd-AO warrants that, for a period of thirty (30) days from your date of receipt, the Software will substantially conform to the applicable user documentation provided with the Software. Any implied warranties which may exist despite the disclaimer herein will be limited to thirty (30) days. This Limited Warranty is void if you obtain the Software from an unauthorized reseller, you violate the terms of this Agreement, or if the failure of the Software is due to accident, abuse, or misapplication. Some states/ jurisdictions do not allow limitations on the duration of an implied warranty, so this limitation may not apply to you.

**CONFORMANCE TO STANDARDS.** The Software may include features and presets to process audio to conform to various industry standards. While Todd-AO has diligently worked to make the Software and presets accurately implement any such industry standards, Todd-AO can make no representation or warranty that the Software or presets will make audio correctly comply with any present or future standard.

**YOUR REMEDIES.** Todd-AO's sole obligation and your exclusive remedy for any breach of the warranty will be, at Todd-AO's sole option, either the return of the purchase price you paid or, if you return the Software, together with all media and documentation and a copy of your receipt, to the location where you obtained it during the warranty period, the repair or replacement of the Software, media, and documentation.



**REGISTRATION INFORMATION.** When you activate the Software, Todd-AO may collect your name and email address and other contact information you choose to provide. Todd-AO may use this information to contact you regarding upgrades and new products, and also to gather statistical data that does not identify individual users.

**USAGE INFORMATION.** When you use the Software, Todd-AO may collect certain information about your computer and your interaction with the Software via the internet ("Usage Information"). Usage Information is information on how you interact with the Software and is then utilized by Todd-AO for statistical analysis for improving the Software, and to provide you with a more relevant user experience. No direct personal information or audio files/samples are collected as part of this Usage Information. Usage Information is generally collected in the aggregate form, without identifying any user individually, although IP addresses, computer and session ids in relation to purchases and downloads/installations of the Software may be tracked as part of Todd-AO's customer order review, statistical analysis, and fraud and piracy prevention efforts. This Usage Information may be sent to a Todd-AO web or third party cloud server for storage or further processing by Todd-AO and/or its partners, subsidiaries, or affiliates, including, but not limited to, Google Analytics.

**DISCLAIMER.** TO THE MAXIMUM EXTENT PERMITTED BY APPLICABLE LAW, TODD-AO DISCLAIMS ALL OTHER WARRANTIES, EXPRESS OR IMPLIED, INCLUDING BUT NOT LIMITED TO THE IMPLIED WARRANTIES OF NON-INFRINGEMENT, MERCHANTABILITY, AND FITNESS FOR A PARTICULAR PURPOSE. TODD-AO DOES NOT WARRANT THAT THE SOFTWARE WILL MEET YOUR REQUIREMENTS OR THAT THE SOFTWARE WILL OPERATE UNINTERRUPTED OR ERROR-FREE. THE WARRANTY AND REMEDIES SET FORTH HEREIN ARE EXCLUSIVE AND IN LIEU OF ALL OTHERS, ORAL OR WRITTEN, EXPRESS OR IMPLIED. The Limited Warranty set forth herein gives you specific legal rights, and you may have others under applicable law, which may vary depending on your location. No dealer, distributor, agent, or employee of Todd-AO is authorized to change or add to the warranty and remedies set forth herein. Any other software furnished with or accompanying the Software is not warranted by Todd-AO.

**LIMITATION OF LIABILITY.** TO THE MAXIMUM EXTENT PERMITTED BY APPLICABLE LAW, TODD-AO WILL HAVE NO LIABILITY FOR ANY DAMAGES WHATSOEVER ARISING OUT OF THE USE OF OR INABILITY TO USE THE SOFTWARE (INCLUDING, WITHOUT LIMITATION, DAMAGES OR COSTS FOR LOSS OF PROFITS, BUSINESS, GOODWILL, DATA OR OTHER ASSETS, OR COMPUTER PROGRAMS) EVEN IF TODD-AO HAS BEEN ADVISED OF THE POSSIBILITY OF SUCH DAMAGES. IN NO EVENT WILL TODD-AO BE LIABLE FOR ANY AMOUNTS EXCEEDING THE AMOUNTS RECEIVED FROM YOU FOR YOUR LICENSE OF THE SOFTWARE. Some jurisdictions do not allow exclusion or limitation of liability for consequential or incidental damages, so this limitation may not apply to you.

**CHANGES.** Todd-AO reserves the right to make any changes to these Terms and Conditions of Use, this Application, or any policy or licensing agreement of this Application, at any time and in its sole discretion, without prior notice. Any changes will be effective immediately upon posting on this document. Your continued use of this Application following the posting of changes will constitute your acceptance of such changes.

**TERMINATION.** The Agreement will terminate automatically if you fail to comply with any of its terms. On termination, you must immediately cease using and destroy all copies of the Software.

**LICENSES TO U.S. GOVERNMENT.** This paragraph applies to all acquisitions of the Software by or for the federal government, or by any prime contractor or subcontractor (at any tier) under any contract, grant, cooperative agreement, or other activity with the United States government (collectively, the "Government"). By clicking "I ACCEPT" below, you are agreeing on behalf of the Government that the Software is "commercial computer software" and "commercial computer software documentation" within the meaning of the acquisition regulation(s) applicable to this procurement. These terms and conditions alone will govern the Government's use of the Software and will supersede any conflicting contractual terms or conditions. If the license granted by these terms and conditions fails to meet the Government's needs or is inconsistent in any respect with Federal law, the Government must destroy all copies of the Software. The contractor/Manufacturer is Todd-AO, 4712 Admiralty Way # 497, Marina Del Rey, CA, 90292.

**GENERAL.** The export of the Software from the United States and re-export from any other country is governed by the U.S. Department of Commerce under the export control laws and regulations of the United States and by any applicable law of such other country, and the Software may not be exported or re-exported in violation of any such laws or regulations. This Agreement is the complete and exclusive statement of the agreement between you and Todd-AO and supersedes any proposal or prior agreement, oral or written, and any other communications relating to the subject matter of this Agreement. This Agreement is in the English language only, which language will be controlling in all respects, and all versions of this Agreement in any other language will be for accommodation only.

**LEGAL.** This Agreement will be governed by and interpreted under the laws of the State of California, United States of America, without regard to conflicts of law provisions. The application of the United Nations Convention of Contracts for the International Sale of Goods is expressly excluded. To the extent permitted by law, you agree that no lawsuit or any other legal proceeding connected with the Software shall be brought or filed by you more than one (1) year after the incident giving rise to the claim occurred. IN ADDITION, ANY SUCH LEGAL PROCEEDING SHALL NOT BE HEARD BEFORE A JURY. EACH PARTY GIVES UP ANY RIGHT TO A JURY TRIAL. To the extent permitted by law, you agree that you will not bring any class action lawsuit against Todd-AO or be a representative plaintiff or plaintiff class member in any such lawsuit.

Should you have any questions about this Agreement or Todd-AO's software use policies, or if you desire to contact Todd-AO for any other reason please email [sales@todd-ao.com](mailto:sales@todd-ao.com).

Please indicate that you understand and accept these terms by clicking the "Accept" option. If you do not accept these terms, the installation will terminate.

BG BUILDER™ (C) 2023 by TODD-AO™ company.  
ALL RIGHTS RESERVED

---

### Credits

Rob Nokes	Designer
Liming Cui	Programmer
Luciano Del Zoppo	Testing and Analysis

**BG Builder™** is a Trademark of **TODD-AO** in the United States.

---